



# ROOTS

Sustainable Agricultural  
Technologies Ltd.

# Basil

# Heating Basil Beds<sup>(\*)</sup>

With GSHE only



**Unheated**

**Heated**

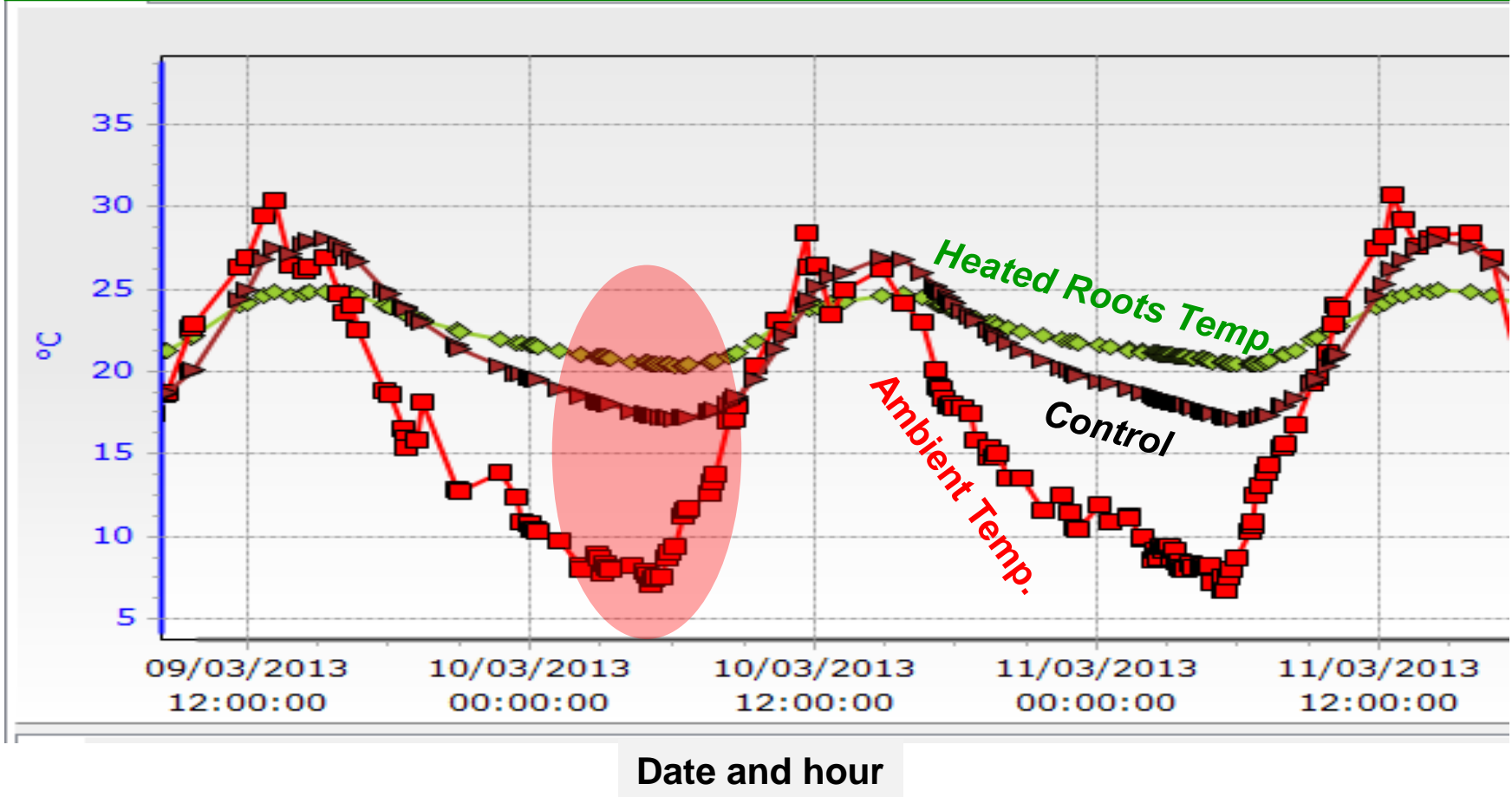
**Unheated**

*(\*) Half Commercial site, Jordan Valley ,ISRAEL, GSHE only*

# Heating Basil Beds<sup>(\*)</sup>

With GSHE only

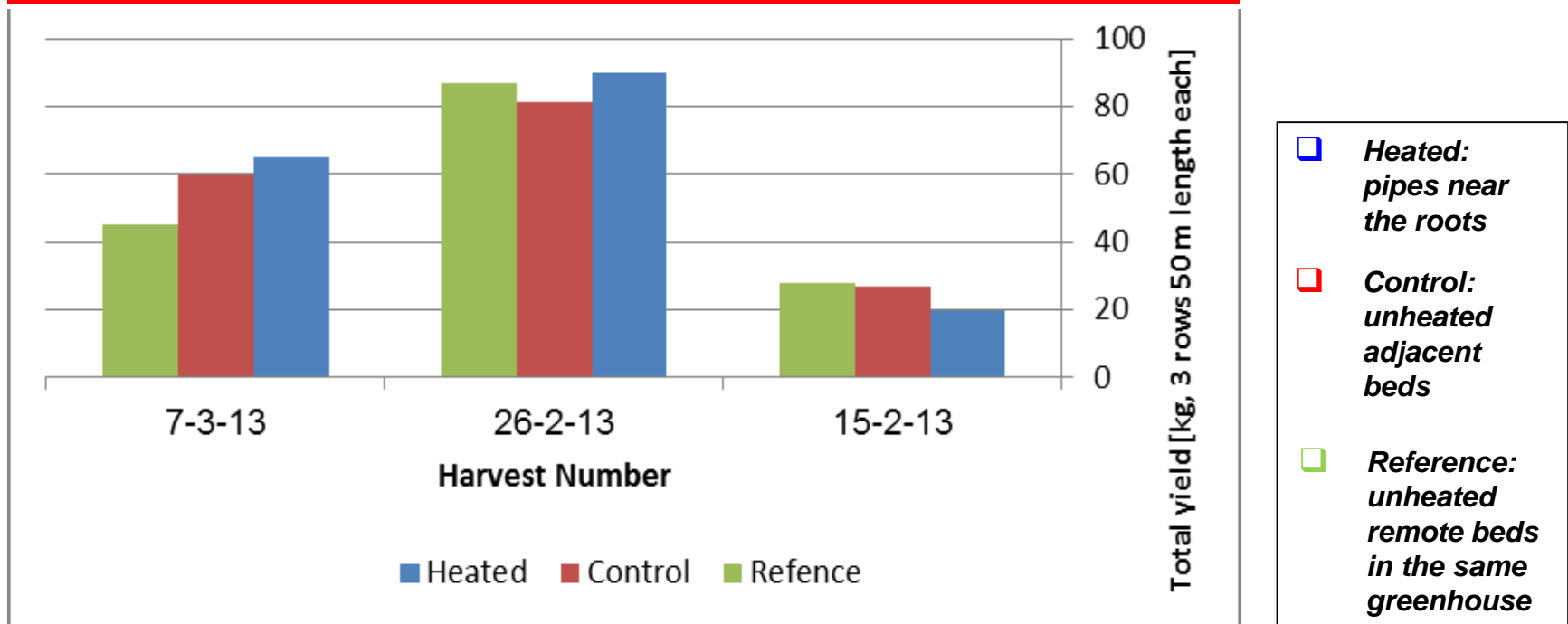
The system was able to maintain stable temperatures near the roots during cold winter nights



(\*) Half Commercial site, Jordan Valley ,ISRAEL, GSHE only

# Heating Basil Beds<sup>(\*)</sup> with GSHE only Yield [kg, 150 m beds] during 3 harvests

- Only 4 harvests due to *Peronospora* sp
- No significant effect of location along the bed was found
- Higher yield was recorded after cold weeks



(\*) Half Commercial site, Jordan Valley ,ISRAEL, GSHE only