



ROOTS

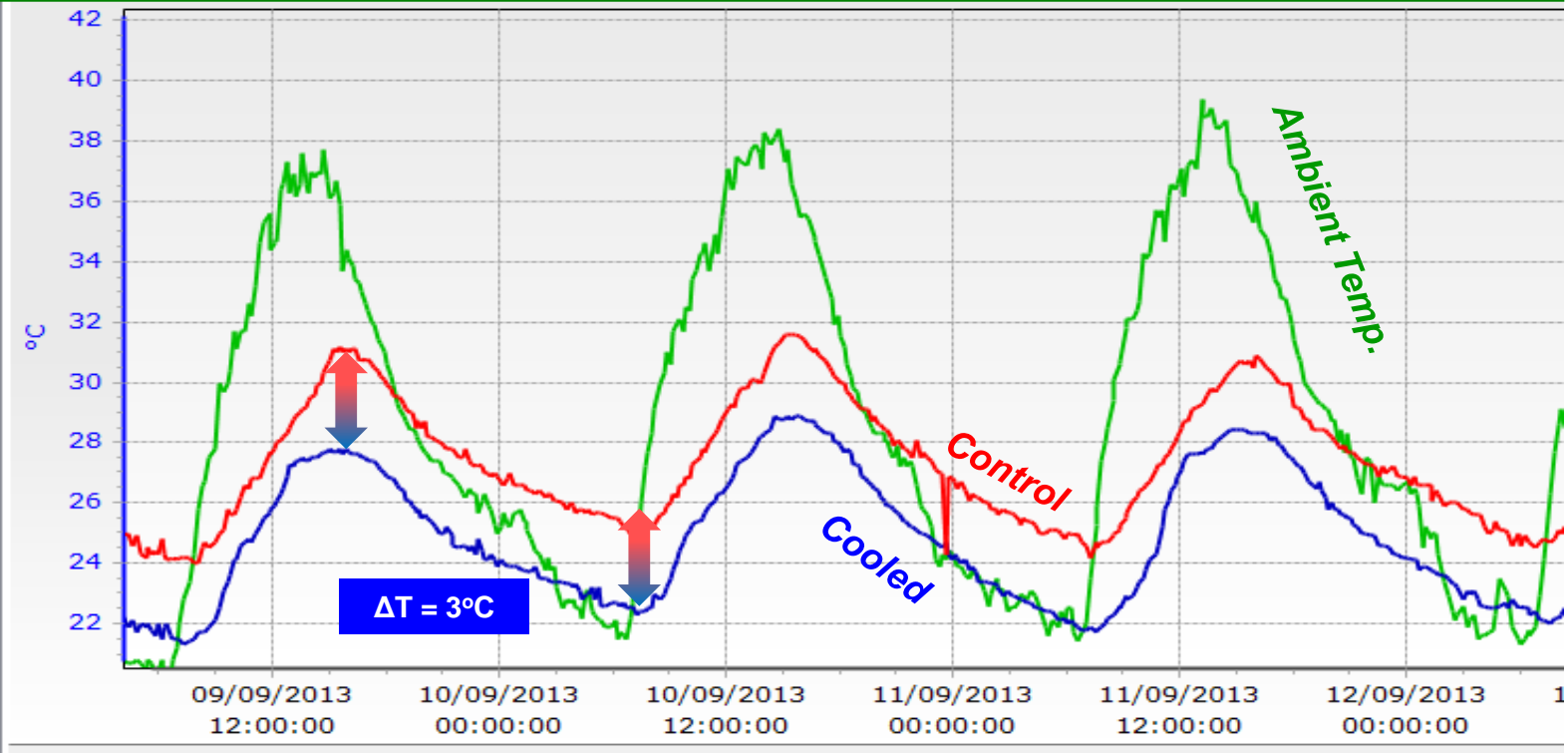
Sustainable Agricultural
Technologies Ltd.

Tomatoes

Cooling Tomatoes (*)

Net house, mid-summer planting

The system was able to maintain an environment 3°C cooler than the control



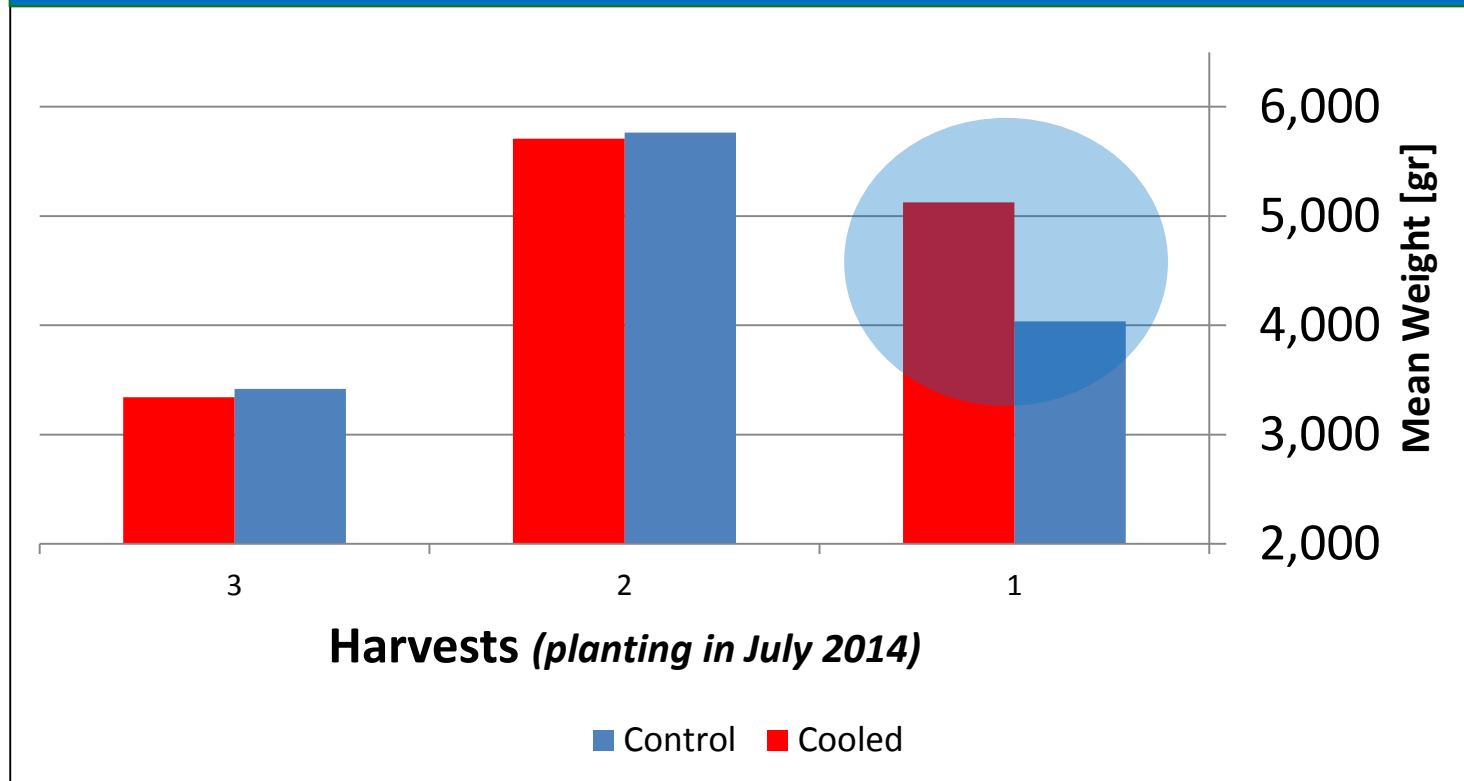
Date and hour

(*) Eden Experimental farm, Jordan Valley, ISRAEL, GSHE + heat pump;

Cooling Tomatoes (*)

Net house, mid-summer planting

Significant difference in weight and # of fruits ($P \leq 0.01$)
at first harvest



(*)Jordan Valley ,ISRAEL, GSHE + heat pump; Harvest before first rain

Cooling Cherry Tomatoes (*)

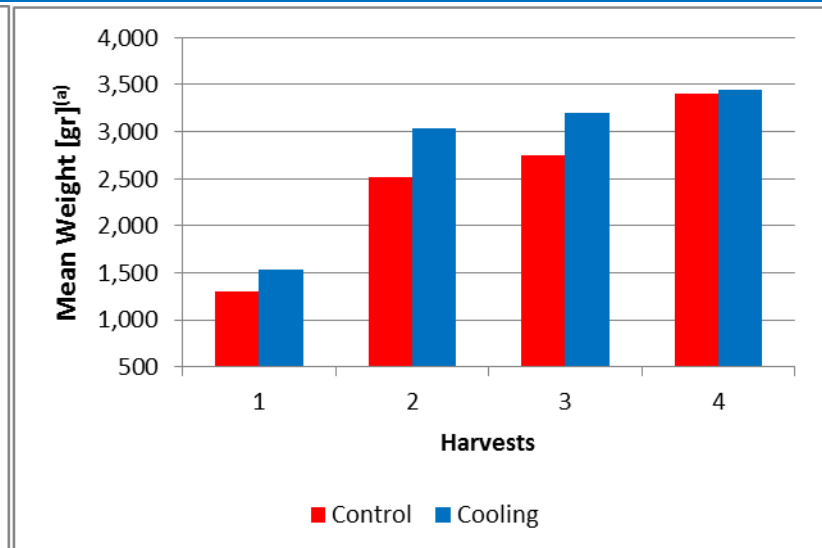
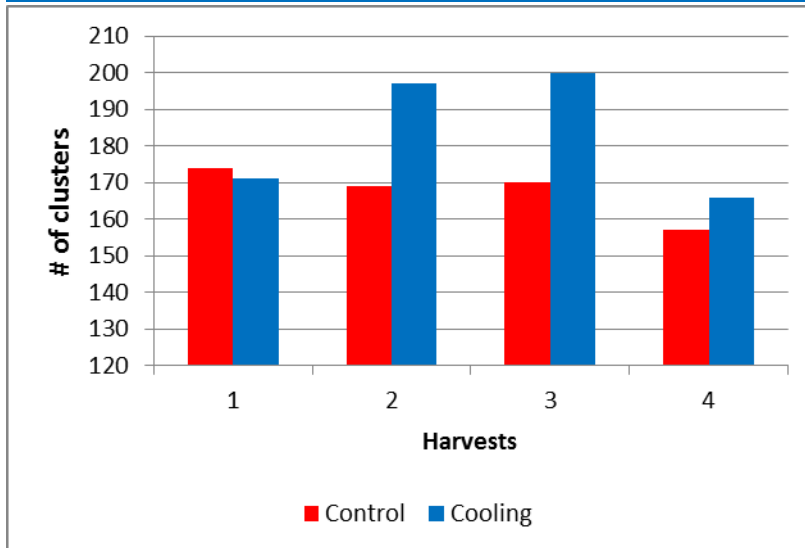
Net house, mid-summer planting

Difference in weight and # of clusters

In first 4 harvests (before first rain)

of Fruits

Mean Weight (a)



(a) Mean weight of 10 plants, in 4 different sample zones along the beds

(*) Jordan Valley, ISRAEL, GSHE + heat pump; Harvest until first rain